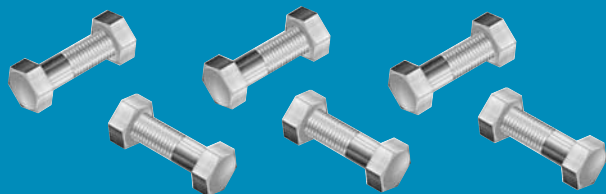


# Nuts & Bolts



February 2014  
Volume 2 Issue 1

Mens Shed Carina Inc.,  
Clem Jones Centre,  
56 Zahel Street, CARINA QLD 4152  
Phone: 07 3395 0678  
Web: [www.mensshedcarina.com.au](http://www.mensshedcarina.com.au)  
Email: [info@mensshedcarina.com.au](mailto:info@mensshedcarina.com.au)

## MEMBER NEWS

### Vale Tony Isaac

Members were saddened to hear of the passing of our member Tony Isaac. Our thoughts are with his family at this time. May you rest in peace Tony.

### Michael Quinn Mates4Mates 18 November 13

Michael Quinn visited our shed and gave the members an excellent presentation on the Mates4Mates initiative. As shown below Michael's visit prompted several members to visit the Mates4Mates Albion facility on 29 January 14.

### Christmas Lunch 2 December 13

Members enjoyed themselves at the Shed Christmas Party/Lunch at the Carina Leagues Club on 2 December 13.



### Mens Shed Carina Wellness Exercise Regime

Mark the dates on your calendar! Thanks go to Chris Davidson and the Membership and Welfare team for organising this excellent initiative commencing on 19 February 14 and continuing each Monday and Wednesday 12 noon to 1pm. Mondays will be in the gym and Wednesdays will be in the pool. See you there!!

### John Parke 9 December 13 – author of *Against the Tide*

John paid us a visit to talk about his book which is a history on the fishing industry in the Wynnum/Manly area. He also entertained us with some short films on the industry.

### Bill Glasson and Aaron Dillaway's Visit on 20 January 14

Federal LNP Griffith candidate Bill Glasson and MP Bulimba Aaron Dillaway visited our shed and spoke on the value of men's sheds in the community, in particular the contribution that men's sheds make towards socialisation and the physical, mental and spiritual health of men.



## MESSAGE FROM THE EDITOR

Welcome to 2014, THE YEAR OF THE HORSE!! 2014 is going to be a big year and a great ride for Mens Shed Carina members. We are embarking on a serious membership drive and our target is 100 members by the end of the year. We are also going to participate in Men's Health Week in June and officially open our new shed. So embrace the spirit, get on board and enjoy the year of the horse!!!

Australia Day is with us again so in the spirit of multiculturalism the Nuts & Bolts team has provided four questions from a sample 20 question citizenship test for you to have a go at in this edition's quiz section – good luck (the Editor tried a couple of the tests and failed to attain 100% on both occasions).

Editor: Bob Ikin

Publisher: Neil Smith

### Mens Shed Carina Visits Mates4Mates 29 January 14

Kevin Searle, Bob Ikin, Steve Dalziel and Chris Davidson visited Mates4Mates on 29 January 14. Mates4Mates is a not for profit charity, initiated by RSL (Queensland Branch) to provide support to our wounded, injured or ill current and ex-serving Australian Defence Force (ADF) personnel and their families. The visit was organised by Kevin Searle and Michael Quinn of Mates4Mates and followed Michael's visit to our shed on 18 November 13. The veterans had just finished their morning workout in preparation for the next Kokoda Track challenge when our blokes arrived. The Mates4Mates team made them very welcome and showed them around their set up. Kevin thanked the veterans for their service to our country and he gave an excellent talk on what men's sheds are about. Kevin invited all Mates4Mates members to visit our shed in the future. All in all a very good morning enjoyed by all participants.



### Shayne Sutton's Visit on 3 February 14

Shayne Sutton, Councillor for the Morningside Ward, dropped in on 3 February 14 and expressed her strong support for our shed. Shayne invited us to participate in the Morningside Festival this year, an offer we will be taking up.

### Les Harvey

Members who knew former member Les Harvey were saddened to hear of his recent death. Rest in peace Les.

## Collectomania Thank You!!!

The Mens Shed Carina members who participated in the Queensland Museum's Collectomania have received a big thank you from the Museum. Well done lads!!



## Terri Butler's Visit on 5 February 14

Terri Butler Labor candidate for the Federal Electorate of Griffith paid us a visit on 5 February 14 and talked to the members about her vision for Griffith.

## Hawthorne Twilight Markets 7 February 14

Bob Ikin, Eddie Haselich, Graeme Fraser, Graham Ward, Bevan Guttormsen and Brian O'Rourke represented our shed at the markets and by all measures the event was a success. Lots of brochures were handed out and whilst they sold some items (the wooden T puzzle was particularly popular) the event was an opportunity to sell the Mens Shed Carina brand. Thanks and well done lads.



## AMSA News

### Blokes Connect with Cars

Sometimes nothing speaks to a young man like the sound of a V8 engine.

A team of Ipswich youth counsellors who formed the group, Ipswich Connect, a year ago, is working on this theory as they try to steer the city's 18-25-year-olds in the right direction.

Director Peter Wiedemann said the group's young men's shed program was giving up to 50 young people the opportunity to restore vintage vehicles like the 1968 HK Holden that currently sits in the garage.

"I have been a youth worker for 10 years and found that there was a big gap in the services for 18-25 bracket and particularly for men in that group," Mr Wiedemann said.

"We have found a lot of them are growing up without work and without direction and life is starting to throw things at them that is making it difficult to cope.

"We aim to provide a positive role model for them, because these people are at an age where they are starting to make some big life decisions that will affect them for years to come."

## Newcastle Hosts National Men's Shed Conference

A homecoming for hundreds of delegates for the Australian Men's Shed Association's national conference is expected to deliver more than \$1 million into the Hunter economy. About 800 delegates from around the country are expected to visit Newcastle when it hosts the event in October 2015. Lord Mayor Jeff McCloy said the association, established in Newcastle in 2007, was something the city should be proud of. "In five years the association, along with the Men's Shed movement, has grown into a national phenomenon that is now being replicated worldwide."

## History of Men's Sheds Enters a Whole New Cycle

Plenty Valley Salvation Army in Mill Park has tinkered with the concept of Men's Sheds and will open its first men's bike shed this Thursday. It will be fully stocked with tools, timber benches and 15 second-hand bikes ready to be repaired by retirees and handed on to asylum seekers and low-income families. David Ramadge, Plenty Valley Salvation Army's communications support manager, initially wanted to set up a traditional Men's Shed but changed plans because of costs. "The bike shed provides the same camaraderie and skills without as much money," he said.

## Executive News

- General discussion concerning the fit out of the shed given that the additional shed is available for use. An ideas workshop is required. Access to the shed computer is being updated to provide password access. The existing keys to the shed have been recalled and sets of keys will be distributed according to an approved key register.
- Business Plan workshop review scheduled for March 2014.
- A review of the induction process for new members and visitors is progressing.
- Request for an external power point outside the Shed. This will improve the shed resources. This will also enhance the relationship with the Clem Jones Precinct and those that support the Precinct.
- Mates for Mates have requested regular visits to the MSC, possibly a weekday. A MSC static display will be installed in the Carina Stones Corner Library. The MSC will be listed in "Sheds on Line."
- An invitation to participate in the Morningside Markets has been received.
- A MSC application for DGR status is required.
- The purchase of a zip heater, stove and PA system with grant monies needs to be completed before MAY 2014
- Non-financial members and those members who have been absent for a significant period of time are being contacted
- The shed cook book is progressing
- A survey to identify interest in specific training has to date, failed to provide a useful outcome.

## Member Profile – Harry Davis

I have lived in Brisbane for all but three years of my life with twenty two years in New Farm and forty six and counting in Cannon Hill.

### Early Teaching

- After completing Senior, I had a year at Kelvin Grove Teachers College to gain a primary teaching qualification.

- ◇ I taught at New Farm and Mitchelton State Schools and in the primary section of Villanova College at Coorparoo.

- ◇ With the abolition of the Scholarship Examination, I moved to the secondary section of Villanova College. I taught Mathematics and Bookkeeping/Accounting.

- ◇ By this time I had taught face to face for 14 years.

- I completed by Education during this period.

### Head Office Education

- I was accepted to go into Head Office of Education:

- ◇ to write articles, undertake research, précis the education literature and assist in the research and writing of the Queensland School Paper sent to Primary Students times a year

### Initial Teaching and Head Office in TAFE

- I then moved into Kangaroo Point Technical College in the Management Section as an Instructor in Accounting.

- In 1973, the Kangan Report changed Technical Education to TAFE and the Federal Government threw many millions of dollars into the system. I was fortunate to obtain two positions under these moneys:

- ◇ Senior Instructor at the Kangaroo Point School of Business, including educational, administrative and HR activities

- ◇ An Education Officer within the Staff Development Section.

- The section had three staff and operated out of the laundry at Alexandra House.

- The section ran management, teaching and administrative courses for TAFE

- I met and worked with Mal Weier here.

- The next move was to review, re-organise and then manage the Head of the Equipment Section of TAFE. This involved the:

- ◇ Purchase of all equipment required by the TAFE Colleges as well as the major consumable purchases.

- ◇ Creation of Purchasing Contracts for both Equipment and Consumables through the State Stores Board.

- ◇ Responsibility for the prepayment phase of all TAFE invoice payments.

- During this time I undertook four semester subjects in basic woodwork and furniture making

- I completed my Commerce Degree during the above period.

- The last group of positions (eight in all) extended over 10 years.



### Mt Gravatt TAFE

- My next move was to the position of Officer in Charge (School of Business) at Mt Gravatt College of TAFE.

- I managed courses in Business (Secretarial) Studies, Administration, Management, Business, Accounting, IT, Marketing and Police/Prisons with some 35 full time and 80 part time staff; the latter were all at top levels in the private sector as well as government departments.

- ◇ The major challenges at this time were:

- ◇ The initial College based installation of the new Wang main frame computers as part of their new buildings as a result of Kangan.

- ◇ The management of same was difficult due to staff we had available were unskilled in main frame administration.

- Computer Accounting

- ◇ The Wang came with a non-standard accounting package which had been developed by one of the big accounting firms and with which I was heavily involved.

- ◇ With all colleges now having access to computer accounting programs, the accounting syllabus was modified to include sixty hours of tuition on computerized accounting.

- ◇ Liaised with the accounting firm.

- ◇ Undertook most of the training of teachers throughout the State after the initial training

- ◇ Prepared all the teaching documentation and practical questions

- ◇ Taught a significant number of students so that the practical work had been completed prior to graduation.

- Student Activities

- ◇ I obtained the Director's authority to conduct some of the Diplomas on a full time basis, commencing with 60 students per annum and ending up in three years with 300 full time students.

- ◇ We were fortunate to be approached by a mining company in the Solomon Islands with a proposal to have two or four of their indigenous supervisors undertake full time studies in the Diploma of Business (Management). The College Director approved the proposal and so did the Head Office Director of TAFE. The joint venture proved very successful over a medium timeframe.

- I was at Mt Gravatt for a period of 11 years.

### End Of Government Service

- Unfortunately, during my next four years I was a gypsy, moving from job to job, essentially in an acting capacity. I was then offered a Voluntary Redundancy which I could not afford not to take at that time.

### Private Sector

- The last part of my professional life actually began just after my sixtieth birthday. I had obtained a position as a Management Accountant with an organization which taught counselling students by external studies.

- The tax accountant who had been providing bookkeeping work was interested in getting figures for the tax returns rather than providing management accounts on a regular basis.

- As the Management Accountant, I was able to:

- Undertake the day to day bookkeeping work required

- Use my accounting, statistical and psychology, to provide monthly management reports to the Managing Director

- From much of this data, provide many cost efficient processes to enhance the teaching processes.

- I finally retired after just over ten years at the company on the 6th August 2010.

### Retirement

- Mens Shed

- ◇ Mal asked and I accepted to join Mens Shed Carina. I hope he is happy he did.

◇ I have enjoyed most of my time there, particularly getting into the stained glass work and the arrival of Adrian, who was a saviour to us.

◇ I really am glad that I have moved out of the accounting work all together.

- Travel

◇ Since Jacqui finished work we have been fortunate to undertake four substantial trips within Australia

◇ I am going to provide a brief article for the Newsletter on these in coming months.

## Morgan Sports Cars

(article provided by Graham Ward our resident "sports car aficionado")

Take a look at these photos of the remake of the classic Morgan sports car. It is completely handmade in England - and it starts out like a piece of furniture in the carpentry shop. After the hardwood frame is built for the body shell it is matched up with a steel frame that holds the engine, transmission and suspension, then it is finished off in the paint shop. Two models are shown here, the convertible and the coupe. It comes with a BMW 4.8L engine. No price was mentioned with these photos but I suspect if you had to ask then you couldn't afford it. (Hint: A deposit of £25,000 is required to ensure the supply of one of these exciting new models. It is anticipated to cost around £108,000)

Photos 14,15,16,17 and 18 are in this edition. This is the end of the article – thanks again Graham for your input.

Graham also has an interest in MG sport cars and he has offered to provide an article on MGs; so watch this space in 2014 for more great stuff from Graham.



## Leadlighting

(an article provided by Adrian Paolucci our resident lead-lighting guru)

The following is a brief history of leadlighting and how, from my own experience, anyone interested can create a practical thing of beauty for their own home or for others. I have certainly gained much satisfaction from this hobby.

Leadlighting and Stained glass is essentially the same thing in that they are basically pieces of cut glass held together with soldered at the joints lead strips, and a colour or picture is painted on the glass and fired in a kiln for the latter as a further step in the process.

Leadlighting has been around for about a thousand years and was for most of this time the only way to make a large window;

as glass was difficult to make in large pieces and relatively expensive. A luxury reserved only for kings, cathedrals and the well healed aristocracy. The remains of windows have been found in the ruins of Pompeii as small panes fixed into bronze and timber latticework (other materials beside lead are used even today as part or total).

In the early days of European settlement in Australia, glass for glazing was indeed a precious commodity. Window frames were kept small and within these frames, metal and timber glazing bars segmented the windows into even smaller areas. This made the use of even the smallest piece of glass no one today would bother with. In fact during the 1800's glass was frequently stolen from existing windows and the penalties if caught were quite severe! Thankfully nowadays the only difficulty is our mastery of this ancient trade and how much time we spend on it.



Going back a bit, monks had to first make their own glass and also cast the lead into what's called 'lead comes' or strips, with a groove on each side for the glass to fit into. All we have to do today is go to a leadlight supplier and buy anything required including tools. Lead is primarily used in modern times as it's relatively easy to use as the humble link between pieces of ordinary cut glass to create a thing of long lasting practical beauty anyone can make today.

Anybody can make leadlight windows. All you need is persistence and patience; this hobby, like many you may have done, certainly taught me patience. Even though I was never particularly skilled with my hands, for example it took me years before was able to (usually) drive a nail in straight or tie a fishing knot. In spite of this handicap I am now on my 48th design and build, this one being as a wedding gift for my daughter Amy (and son-in-law of course) as a 2.2 x .6 metre double entry panel beside the front door of their home.

I started by doing a basic TAFE course in the early 80's. Back then we had a mortgage, kids and like most, little money to spare; so for the cost of buying just one leadlight window, why not learn how to make them instead? Without doubt I was the class dummy as I didn't even know which end of the glass cutter to use but by course end had designed and completed my first window. It sure had a lot of mistakes in it but that's the best way to learn they say. This replaced a louvered window on the back landing which is now our upstairs loo.

In fact I used the glass from these louvres and any glass scrounged from old windows and from anyone back then. I gained experience over time by making windows for family, friends and work colleagues for just above cost of materials. Together with restorations and a few copper foil light/lampshades have given me much satisfaction since then and can for you too.

We currently have a small group at Mens Shed Carina making their first leadlight creation. Once we have the space and lighting required when the new shed is up and running will be able to cater for more and make some worthwhile projects for ourselves and the community. I would be happy for anybody to join us, don't worry whether you are up to it or not. You can be as serious or not as you like as I am no expert, just a hobbyist like many of you and hope to learn some skills myself.

I'd like to thank Mal for approaching me to join such a worthwhile organization. The camaraderie and skills shared is very warming.

### Mens' Shed Member Steve Could Be Called a "Tri" Hard

Member Steve Dalziel is no fitness freak, or a fitness fraud, he just wants to have fun.

His married daughter Kimberley asked him to go in one more triathlon at Raby Bay before Christmas and match it with her.

Steve had completed about 12 triathlons, with the last one approximately five years ago, before his prostate cancer, and he took up the challenge to compete, following yet another successful season of umpiring all categories of AFL.



"I have been training pretty much for about two months at the Clem Jones Centre for this event to get my swim leg of the race going again and also negotiating around a three kilometre circuit to get my running up to speed," Steve said.

"I have always been OK on the bike part of the race.

"It has been of great use working out with fellow Mens Shed Members Chris Davidson and Rob Ikin, helping with cardiovascular fitness in the centre's gym on Mondays and Wednesdays, after a morning at the shed laughing and joking with various people.

"I am only in this fitness thing at my age to stave off type 2 diabetes, make sure I have good bone strength and can enjoy life.

"It makes your food and drink taste better..... and you sure sleep more soundly," Steve said.

Chris and Rob joined Steve in a moderate exercise program in November and December in preparation for the Shed's Wellness Exercise regime which kicks off in January next year at the centre.

"More people should come along and do a bit, just at their own pace, in the gym. It can be really enjoyable and you don't have to be in training for any sort of marathon to join in. Once you overcome shyness and the resistance in your own mind, it's easy," Steve said.

"The Wellness Committee will be recruiting folks to come and have a try on the walkers and exercise bikes in the gym in the New Year and I encourage people to have a go under supervised conditions.

"It is great to have a bit of mild exercise with your mates, and then having a bite to eat at the canteen before you go home to get on with the rest of the day," Steve said.

Steve said he was quite happy in doing the 300m swim, 12k bike ride and 2.5k run in 56 minutes at Raby Bay and he was looking forward to improving in more triathlons, perhaps longer distances, in the first three or four months in 2014.

### Bocce Chute

You will recall the excellent work Bevan Guttormsen and Dennis Beck did on the bocce chute project (Nuts & Bolts Volume 1 Issue 11 August 2013) well here is a photo of the chute in use. Well done lads!!

The following note has been received from the Head of Special Education at Macgregor Primary School:

"Thank you very much for making the bocce ramp for our disabled students. They have had lots of fun playing the game and having the ramp makes it so much easier for our children in wheelchairs."



Thank you from Macgregor Special Education Unit for making our Bocce ramp.

### South East Advertiser Visits the Shed

04 NEWS		115	116	117	118	119
CARINA						
<b>Reporter chips in to assist</b> <b>MEN'S SHED NEEDS DONATIONS</b>						
<p>EVERY man needs a shed in the Carina Men's Shed's opinion and as the group grows it is looking itself a while now as to accommodate its growing membership.</p> <p>The 20-plus members of the shed have created many things. They welcome trophies for local athletes, all possible glass made for your maintenance, and even with the shed's problems, but don't get me wrong, it's not just a shed, it's a place where you can go to get on with the rest of the day," Steve said.</p> <p>Steve said he was quite happy in doing the 300m swim, 12k bike ride and 2.5k run in 56 minutes at Raby Bay and he was looking forward to improving in more triathlons, perhaps longer distances, in the first three or four months in 2014.</p>		<p>South East Advertiser reporter Harry Stronquist (right) gets to work with Carina Men's Shed's Shed Members.</p>				
<p>QUEST LENDING A HAND</p>		<p>CONTACT US</p>				

## Local History

(article researched and provided by John Eiseman)

Between 1844 and 1850 there was a period of stress and strain in Moreton Bay when flocks on the Darling Downs and in New England were decimated by drought and disease. At that time Brisbane was really three separate townships, for, as well as the original settlement of North Brisbane, there were rival settlements at Kangaroo Point and South Brisbane. In 1846 there were only 483 people in North Brisbane and 346 people in South Brisbane. Apart from a few slab huts and shanties, the only establishment on Kangaroo Point was the boiling down works of John Campbell, who employed a large number of men.

\*Watch this space next edition for some more local history.

\*There a number of history buffs in the shed and if there is enough interest we may start a History Interest Group. Let Bob Ikin or Harry Davis know if you are interested

## Did You Know?

(Article written by Harry Davis)

### The Queensland State Scholarship examination:

- Was taken by students at the end of eight years primary schooling; the student were about 14 years old
- Was conducted from 1876 to 1962
  - a. 1875 was the first Public Instruction (Education) Act
  - b. January 1964 all students moved seamlessly from Primary to Secondary without any barriers
- Had three main purposes:
  - To select persons to go into Secondary Education
  - To provide a guide to though entering an apprenticeship
  - To indicate those who would go into the workforce.

If a student obtained 50% in the examination, they could:

- Attend any State High School without payment for the next two years. Those who attended private school had the same amount paid to their school towards tuition or
  - They could obtain an apprenticeship in Class C Apprentices, e.g. Painting and Decoration, or
  - They could choose to join the workforce.

Those who did not obtain 50% also had two choices –

- Join the workforce (usual) or
- Their parents could elect to pay the tuition to the school they attended.

A student could obtain a Class B Apprenticeship, e.g. Carpentry and Joinery or a Class C Apprenticeship, if they were successful in their Sub Junior (one year of secondary) Subjects.

At the end of the two years, students sat for an external examination prepared by the University of Queensland.

Those who were passed this exam with four C's, I think, -

- Could go onto Senior and then to University or
- Join the workforce or
- Obtain chose Class A Apprenticeships, e.g. Electrical and Fitting and Turning or for that matter a Class B or C Apprenticeships.

As an example, at the schools I attends we had about 80 in a single Scholarship class, 30 in Sub Junior and 25 in Junior. Of these latter, about 10 students went onto Senior.

Further information is available at the reference Recollections of a Scholarship Teacher by Googling [primarieschooling.net/?page\\_id=474](http://primarieschooling.net/?page_id=474)

## HEALTH AND WELFARE CORNER

Summer is here – drink up! (this article is attributed to “Chapters” PresCare News Spring 2013 edition and provided by Kevin Searle

Your body depends on water for survival. Did you know water makes up more than half of your body weight? Every cell, tissue and organ in your body needs water to function correctly. For example, your body uses water to maintain its temperature, remove waste and lubricate joints. Water is essential for good health.

There are different recommendations for daily water intake. Most people have been told they should be drinking 6 to 8 glasses of water each day, which is a reasonable goal. However, different people need different amounts of water to stay hydrated. Not all your fluid needs to be water so feel free to mix it up with juice and cordial, but remember tea and coffee can add to dehydration.

Symptoms of dehydration include:

- Feeling dizzy or lightheaded
- Confusion
- Headache
- Dry mouth
- Little or no urine, or urine that is darker than usual
- Extreme thirst
- Sleepiness or fatigue

## John Eiseman's Boat

The boat is complete and had a successful maiden voyage. Well done Bevan and John.



## MONTHLY TIP

### 1. Care of Paint Brushes (second in a series of articles provided by our Shed Manager, Bevan Guttormsen)

For oil based paints

First, determine which solvent is right for the paint product you are using (information can be found on the paint can). Rule of thumb, use mineral spirits or paint thinner for oil based paints, stains or varnishes. Use alcohol for shellacs. Pour enough solvent into a container to fully cover the brush bristles. Don't use too large a container as you will be refilling it several times. Dip

and swirl the brush in the solvent, working it into the bristles. Repeat the process with clean solvent until the bristles are clean. Spin or flick the brush by hand or with a mechanical spinner to remove the solvent.

Once the brush is clean, it is recommended you comb the bristles to remove any dried paint and to reshape the brush. This will keep the heel of the brush from filling with hardened paint. Combing the brush is particularly important if you use a brush spinner as the bristles can become tangled. You can find brush combs at most hardware and paint stores. After you have cleaned the brush, let it dry hanging on a peg or nail. You can also place it on a flat surface. When the brush is dry put the protective jacket back on the brush. This will help to retain the proper shape.

### BUSH POETS SOCIETY

Apparently there are a number of bush poets in our shed. If you are “a poet and didn’t know it”, Nuts & Bolts will give you the chance to publish your work at no charge.

Bob Ikin has provided this piece of work.

Goovigen is a town in central Queensland. It is in the Banana Shire local government area, 660 kilometres northwest of Brisbane and southwest of Rockhampton. It is located in the Callide Valley. At the 2006 census, Goovigen and the surrounding area had a population of 287. The local hotel is the Royal Hotel.



### LOYAL TO THE ROYAL IN GOOVIGEN TOWN

I WAS TRAVELLING THROUGH THE CALLIDE IN '80,  
WHEN I STOPPED AT A LITTLE TOWN CALLED GOOVIGEN,  
I ASKED A BLOKE “WHERE CAN I GET A BED MATE?”  
HE SAID “THERE’S ROOM AT THE ROYAL FOR A VERY GOOD RATE.”

THE BEER WAS COLD AND THE BED WAS WARM,  
THE PUB WAS OLD AND THE LOCALS FRIENDLY,  
“YOU SHOULD’VE BEEN HERE ON AUSTRALIA DAY”,  
SAID NORM,  
“TOO MANY PEOPLE IN THE PUB WE WENT TO ROCKY!!”

THE COCKATOOS, CROWS AND COCKATIELS HAD A SNEER,  
KANGAROOS WERE JUMPY, ECHIDNAS WERE PRICKLY,  
WE’RE OFF TO JAMBIN FOR A BEER,  
THE GOOVIGEN PUB DISAPPEARED SO QUICKLY.

IF YOU’RE IN THE NEW ROYAL WHEN THEY TALK OF THE FIRE,  
LISTEN CAREFULLY FOR THE GHOSTS OF OLD,  
MALCOLM’S HORSES, GEORGE HAVING A YARN,  
NUGGET AND MERTYL,  
JELL POURING YOU A BEER,  
MANY A STORY WAS TOLD IN THE OLD ROYAL, BUT  
IT’S BEEN MANY A YEAR,  
SINCE THE PUB BURNED DOWN IN OLD GOOVIGEN.

## PUZZLES, JOKES AND TRIVIA

### Multiple Choice Citizenship Test (answers on the back page)

- In the citizenship pledge, who do you pledge your loyalty to?
  - The Commonwealth and its people
  - The Queen of England
  - Australia and its people
- What are the 3 Australian flags?
  - Australian National Flag, the Australian Aboriginal Flag and the Tasmanian Flag
  - Australian National Flag, the Australian Aboriginal Flag and the Torres Strait Islander Flag
  - Australian National Flag, the Union Jack and the Australian Aboriginal Flag
- What does the Coat of Arms identify?
  - The authority and property of the Commonwealth of Australia
  - Six states and territories
  - Australian defence forces.
- How many steps does a bill have to go through to become a law?
  - 6
  - 7
  - 4

### Mystery Object (provided by Dante Ballarino)

Guess this edition’s mystery object.



### Piemonte

(an article provided by Dante Ballarino)

The parents of one of the founding members of Mens Shed Carina, Dante Ballarino, emigrated from Piemonte in 1924. What and where is Piemonte? The name means foot of the mountain and is the region in the north west of Italy adjacent to France, Switzerland and regions of Lombardy and Liguria (also known as the Italian Riviera). The highest mountains in Europe, Mont Blanc, the Matterhorn and Monte Rosa are to the north and Lake Maggiore to the east. The River Po has its source in the Alps and flows through very fertile lands to the Adriatic Sea.



White cross on red – Royal House of Savoy  
Emblem on top represents 3 highest mountains – Mont Blanc, Matterhorn, Monte Rosa  
Dark blue colour – royal blue, white and red used extensively  
Green, white, red are the Italian national colours used by Napoleon to differentiate from the French

The history of Piemonte has

long links to France and has been influenced by the French rulers. The northern part is bi lingual and French is still spoken. Regional food is closely similar to French cuisine (butter and cream is used extensively).

The area is one of the most industrialised areas in Italy and is home to the Fiat conglomerate of companies, Olivetti, Lavassa, Ferraro, vehicle body builders and designers Bertone, Giugiaro and Pininfarina and many factories producing household white goods, farm machinery and textiles. Many artisans produce specialised goods for example in the small town of Valenza over 1000 goldsmiths produce gold jewellery. The major source of mercury in the world is found in Piemonte. Other minerals are not sufficient for local usage and have to be imported. Agriculture is a major industry and specialist crops such as wheat (durium) and rice (aborio) are exported. Well known products such as parmesan, gorgonzola cheeses, palma hams, chestnuts, truffles are widely used and known worldwide. Wine production is a major industry and some 185,000 acres produce d.o.c. wines (d.o.c. "Demoninazione di origine controllata" – label guaranteeing the quality of wine) such as the world famous Barolo and Barbera reds and in the south Lambrusco, Asti and of course the grape brandy grappa. Piemonte is also home to one of the world's largest cattle breeds, the Piemonte white (once used as work horses).

The area is not packed with tourists as in many other areas so is relatively unspoilt. An abundance of national parks exist and on some reserves there are still wild bears, wolves and boar as in years past. Whether ones interest is history, museums, fortresses, castles, monasteries, churches, medieval cities, mountains, farms, parks or in a multitude of festivals Piemonte has them all.

### Believe it or Not

Roman engineers were required to stand under the bridge they designed and built during the official opening (saved having a Quality Control Department).

The man who was the sole voice against the introduction of the cane toad to Australia in 1935 was named WW FROGGATT. Mr Froggatt protested the release of the cane toad, claiming that they may do massive long term damage to the eco system. His protests were dismissed.

### Quotes of the Month

For the golfers in the Shed (provided by Steve Dalziel):

- The Law of Physics States it's easier to get up at 6:00 AM to play golf than at 10:00 AM to mow the lawn.
- A good drive on the 18th hole has stopped many a golfer from giving up the game.

### UPCOMING EVENTS

Date	Activity	By Whom	Location
19/2/2014	Health and Wellness Program Commences	Members	CJP Pool
24/2/2014	Queensland Spinal Association (QSA)	QSA Reps	The Shed
3/3/2014	Steve Minnikin Visit	Steve Minnikin	The Shed
10/3/2014	Balmoral Rotary Presentation	Balmoral Rotary	The Shed
23/3/2014	Chandler Markets Stall	Members	Chandler
4/4/2014	Carindale Library Public Presentation	Mal, Bob, Dennis	Carindale
3/5/2014	K Mart Cannon Hill Shopping Centre Stall	Members	Cannon Hill
10-15 June 2014	Men's Health Week	Members	CJP
Late July 2014	Morningside Festival Stall	Members	Morningside
31 August 2014	Bulimba Festival Stall	Members	Bulimba

- A good golf partner is one who's always slightly worse than you are. That's why I get so many calls to play with friends.
- A pro shop gets its name from the fact that you need to have the income of a professional golfer to buy anything in there.
- If your opponent has trouble remembering whether he shot a six or a seven he probably shot an eight or worse.
- It takes longer to become a good golfer than it does to become a brain surgeon.
- However, a brain surgeon can't ride around on a golf cart, eat hot dogs, drink beer and fart while performing brain surgery.

### Plumber of the Year Award (provided by Steve Dalziel)



### Solution to Citizenship Test

1. C
2. B
3. A
4. C

The mystery object is a "bed warmer".