

NUTS & BOLTS



'Every man needs a shed'

Vol 6 | Issue 2 | June 2022



In This Edition

- Page 2** Pickle Making Workshop
Bunnings BBQ
- Page 3** Handover of Tom Kenny's Train
- Page 4** Gold Coast Motor Museum Bus Trip
- Page 5** Shed's 2022 Ekka Entries
- Page 6** Poetry Corner
- Page 7** Photo of the Month
- Page 8** Glampers Broadwater Tourist Park
- Page 10** Geometry Lesson –Darryl Timms
- Page 11** HMB Endeavour Replica – Bob Ikin
- Page 13** Great Moments in Science
- Page 14** Puzzles, Jokes & Trivia

Message from the Editor

Editor: Ray Peddersen

cms_editor@carinamensshed.org.au

Congratulations to the leather, glass, woodwork and photographic group members for their great work over the last couple of months in creating and entering eight items into the RNA Craft completion at this year's Ekka.

I would also like to thank the contributions of Paul Gardiner, David Sim, Peter Kucks, Bevan Guttormsen, Darryl Timms and Bob Ikin to this issue of Nuts & Bolts.

Vale Norm Pledger and Alan Peiniger both of whom, will be sadly missed by all members of our shed.

"A person with a new idea is a crank until the idea succeeds" Mark Twain



Carina Mens Shed Inc.,

Clem Jones Centre
56 Zahel Street
CARINA, QLD, 4152

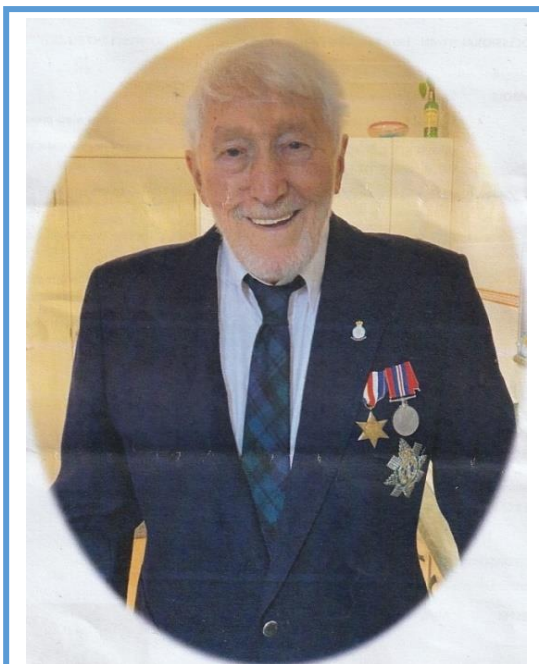
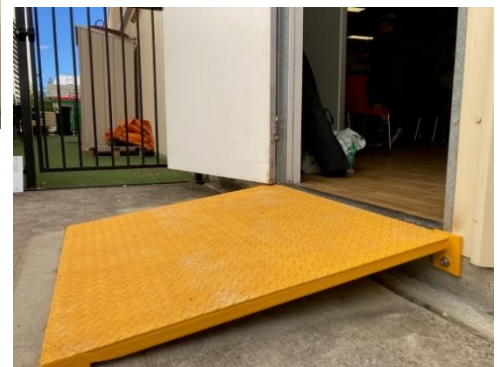
Ph: 0466 092 603
E: cms_info@carinamensshed.org.au
W: www.carinamensshed.org.au

Carina Men's Shed valued supporters include:



Helping hands keep our shed ticking.

Mr Pickles and his apprentices have been preparing pickles and jams. Ross Allan has constructed and installed the new access ramp and the new container has been painted and fitted out. While the glass, leather, woodwork and photographic groups, have been busy preparing eight entries for this year's Ekka.



Vale Norm Pledger

18 October 1926 – 03 July 2022

Norm aged 89 joined our shed in April 2015, and often amused members with his yarns about his army and police life. He will be sadly missed by all members of our shed.

Bunnings BBQ

Saturday 25 June 2022

Thanks to the **Morning Shift**: Stephen Lock, Klaus Binder, Bill Eklund, David Bastian and Peter Kucks.
 Thanks also to the **Afternoon Shift**: David Clarkson, John Rossberg, Freddie Butler, Ron Webb and Paul Gardiner.
 The relocation of BBQ to the Bunnings entrance, kept the shed team on the go all day and returned over \$1500.

Upcoming Events

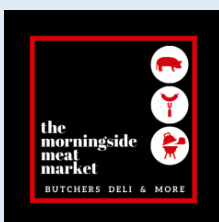
Bunnings Ekka Stall - Wednesday 10 August

Kite Festival - Sunday 21 August

AGM, Belmont Bowls Club - Wednesday 24 August

Band's Performance - Wednesday 27 September

Carina Men's Shed valued supporters include:



Handover of Tom Kenney's Train to Ronald McDonald House *Wednesday 18 May 2022*

Choo, choo, off it goes. Tom's wooden train has been donated to Ronald McDonald House, for children to play with while they recuperate in hospital. This came about through a kind donation of \$500 from John Rossberg's mate, Michael Bottomley. Thank you, Michael, for your generous donation.

The Santa Fe Express was originally created and developed by Tom Kenny as an exercise in recycling of second-hand pallet timber. It took him about 3 months to construct. He made all the components and slowly built up a modern diesel electric locomotive and six carriages measuring over two meters long. The rolling stock included a caboose, oil tanker, flatcar, boxcar, gondolla and hopper train cars. Each car has proper trucks under each car. There are 64 wheels all together.

The whole train is made of timber with a light coat of stain, so it is safe for young people to play with. Tom originally entered the Train in the annual Ekka competition and won first prize. Congratulations to Tom, this was a great project. Tom is now developing a raw material Road Train, consisting of a prime mover and several trailers or 'dogs'.

Submitted by Paul Gardiner



Member's News

Probus Bus Trip to Gold Coast Auto Museum, Upper Coomera Thursday 19 May 2022

Shed members, Peter Kucks, David Clarkson, Greg Crew, Kevin Searle, Paul & Gail Gardiner and John & Brenda Abbott, made up the numbers for the Carindale Probus Club bus trip to the Gold Coast Auto Museum followed by lunch at the Hope Island Tavern. - **Photos submitted by Peter Kucks**

1929 Cadillac LaSalle Coupe



1924 Stanley Steamer



The Sheds Ekka Entries – 2022 submitted by David Sim

The Carina Men's Shed will be well represented at the Ekka this year with eight entries from our shed in the RNA Craft competition. Tom's excellent wooden train won last year and he has backed up this year with a road train. Allen Linning has entered a photograph taken at Wynnum Creek, capturing the reflected light and producing a photo that looks like a painting in the soft French Impressionist style. Peter Kucks has crafted a buffalo hide belt, with brass buckle and hobble ring, hand sewn with a traditional design. David Sim has entered two leather articles, a lined and tooled ladies handbag, and a tooled and hand sewn leather cover for a Kindle reader. The show stealer will be Rex Gelfius's magnificent Alpine Chalet, complete with internal lighting, curtains, miniature furniture, and mounted on a swivel base. Rex was assisted by members of the wood working group in the furniture making and other jobs, a real team effort.

John Rossberg, being a relative new member, and a keen learner at glass crafting, has produced a terrific moulded glass serving plate. The glass group's imaginative light box made of timber, in which a group of moulded glass panels is mounted vertically in series, and lit from the rear of the box is still under construction, but is available to view in the glass section.



Poetry Corner

This poem submitted by Bevan Guttormsen originally appeared in October 2019 Nuts & Bolts and contains important Work Place Health & Safety advice.

The Cocky Checks his Stock

The sun was hot already - it was only 8 o'clock
The cocky took off in his Ute, to go and check his stock.
He drove around the paddocks checking wethers, ewes and lambs,
The float valves in the water troughs, the windmills on the dams

He stopped and turned a windmill on to fill a water tank
And saw a ewe down in the dam, a few yards from the bank.
"Typical bloody sheep," he thought, "they've got no common sense,
"They won't go through a gateway but they'll jump a bloody fence."

The ewe was stuck down in the mud, he knew without a doubt
She'd stay there 'til she carked it' if he didn't get her out.
But when he reached the water's edge, the startled ewe broke free
And in her haste to get away, began a swimming spree.

He reckoned once her fleece was wet, the weight would drag her down
If he didn't rescue her, the stupid sod would drown.
Her style was unimpressive, her survival chances slim
He saw no other option he would have to take a swim.

He peeled his shirt and singlet off, his trousers, boots and socks
And as he couldn't stand wet clothes, he also shed his jocks.
He jumped into the water and away that cocky swam
He caught up with her somewhere near the middle of the dam.

The ewe was quite evasive she kept giving him the slip
He tried to grab her sodden fleece but couldn't get a grip.
At last he got her to the bank and stopped to catch his breath
She showed him little gratitude for saving her from death.

She took off like a Bondi tram around the other side
He swore next time he caught that ewe he'd hang her bloody hide
. Then round and round the dam they ran, although he felt quite puffed
He still thought he could run her down, she must be nearly stuffed.

The local stock rep came along, to pay a call that day.
He knew this bloke was on his own, his wife had gone away,
He didn't really think he'd get fresh scones for morning tea
But neither was he ready for what he was soon to see.

He rubbed his eyes in disbelief at what came into view
For running down the catchment came this frantic-looking ewe
. And on her heels in hot pursuit and wearing not a stitch
The farmer yelling wildly, "Come back here, you lousy bitch!"

The stock rep didn't hang around he took off in his car
The cocky's reputation has been damaged near and far
So bear in mind the Work Safe rule when next you check your flocks
Spot the hazard, assess the risk, and always wear your jocks!

Member's News

May Photo of the Month -Theme Small Objects or Macro

After many failed attempts Paul Esdaile was able to capture this freeze frame moment as a drop of water breaks the surface tension of the glass of water below.



Glampers Report Broadwater Tourist Park 09-13 May 2022

Monday: Saw, Bevan and Margaret Guttormsen, Joe and Roz Garske, Bruce and Jan Murray, , Klaus and Sylvia Binder, Julian and Elan Collins arrive and setup at Broadwater Tourist Park, the weather wasn't too bad but it all went south for the rest of the week. Paul Meredith joined us as a day visitor on Tuesday.



Tuesday: The guys, plus Paul Meredith (day visitor) went to Labrador Men's Shed, while the ladies spent the morning chatting and having morning tea at Bruce and Jan's cabin. For lunch on Tuesday, we all went over to Main Beach Surf Club and by this time the weather was changing for the worse.

Wednesday: Rain, saw all of us over at Klaus and Sylvia for morning tea, and after lunch back over for a game of cards and happy hour. By this the rain was bucketing down, Wednesday night we went to Southport R.S.L Club for dinner. By about 10.00pm the wind was blowing around 30+ knots, so the decision was made to drop my annex.

Thursday: Saw Marg and I wading in water in our van (leaking water pump), so we made the decision to pack it in and go home.

Thursday saw the rest of the group go out for lunch at a bowls club in Southport. **Friday** saw the rest of the group pack up and head for home.



Our next trip away hopefully in July, I may not be able to go as our bathroom could be started to be renovated by then.

Did You Know?
Submitted by Graham Ward



DID YOU KNOW?
Beer reduces the Risk of developing Kidney Stones by 40% .



DID YOU KNOW?
A **TIGER'S TONGUE** IS SO ROUGH, IT CAN LICK THE **PAINT OFF BUILDINGS** AND **STRIP THE SKIN** FROM THE BONES OF AN ANIMAL.

Using Simple Geometry submitted by Darryl Timms

ERATOSTHENES

More than 2,000 years ago a Greek mathematician Eratosthenes estimated the circumference of the earth with remarkable accuracy. How did he do it?

Eratosthenes used simple geometry and trigonometry.

He knew about a famous well in an Egyptian city Syene, now known as Aswan. At midday on one day every year, the sun's rays shone straight down into the well illuminating the water at the bottom.

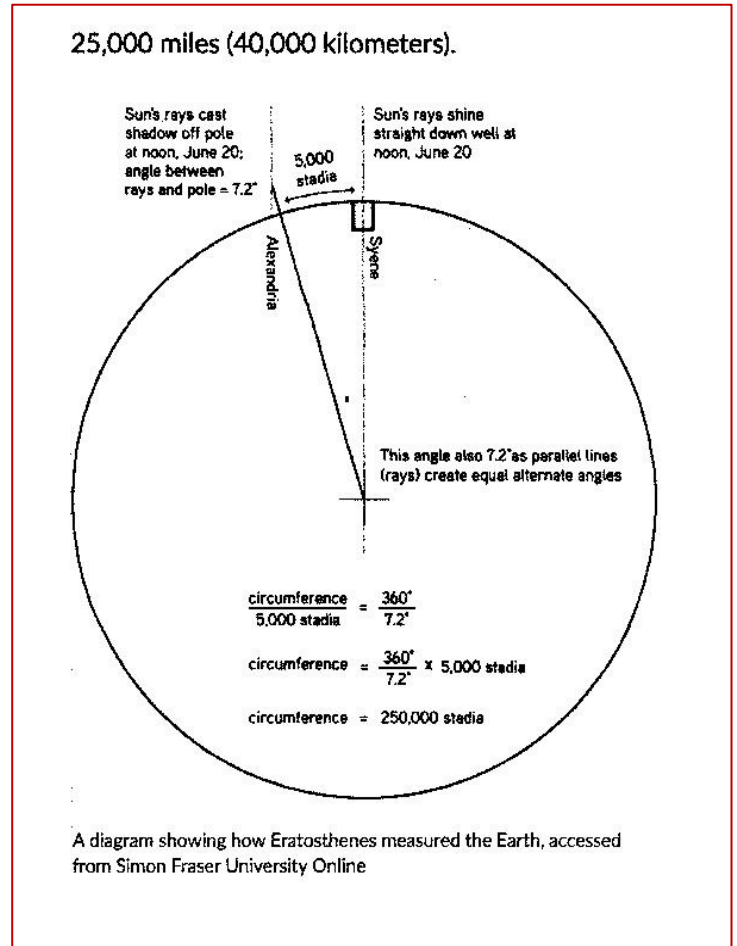
The well was located very close to the tropic of cancer so the sun on that particular day was directly overhead, the summer solstice, the northmost latitude. Eratosthenes erected a vertical pole in Alexandria some distance north of the well and the tropic of cancer. On that one day of the year, he observed the pole cast a shadow confirming the sun was not directly overhead at midday. He measured the height of the pole and the length of the shadow. Using trigonometry, he noted the angle of the sun's rays off the vertical was 7.12 degrees. Eratosthenes already knew the earth was round or a sphere and a circle has 360 degrees. He divided 360 by 7.12 and his answer was near enough to 50. He concluded that the distance between his pole and the well in Egypt is one fiftieth of a circle. Multiply that distance by 50 and he would have the circumference of the earth.

At that time in history the Egyptian unit of measurement for distance was the stadia, the length of an athletic stadium, or about 158 metres. Long distances were measured by trained walkers using regular strides. Eratosthenes estimated the distance between his pole and the well to be 5,000 stadia, multiply that distance by 50 and the circumference of the earth must be very close to 250,000 stadia. To bring his estimate up to date multiply 250,000 stadia by 158 metres and the answer is 39,500 kilometres. The actual circumference of the earth is 40,000 kilometres. Well done Eratosthenes.

Eratosthenes achieved much more in his lifetime, he was a geographer, mathematician, astronomer, historian and a poet. He invented the system of longitude and latitude, calculated the tilt of the earth's axis with amazing accuracy, calculated the distance from the earth to the moon and to the sun but with less accuracy and he created a system for finding prime numbers. He starved himself to death when he was 82 years of age because he feared the onset of blindness.

SOH CAH TOA – A word every competent carpenter recalls when they pitch a roof
(Sine Opposite over Hypotenuse, Cosine Opposite over Hypotenuse, Tan Opposite over Adjacent)

The 2022 summer solstice is on the 22nd of December. Now all you need is a scientific calculator, a vertical pole in your back yard and the distance between your place and Rockhampton.



HMB Endeavour, the Replica and the Model submitted by Bob Ikin

Continuing with my interest in sailing ships I hope you find this article interesting. In 2012 I had the good fortune of crewing on the Endeavour replica from Hobart to Melbourne.

ORIGINAL SHIP

In March 1768 the Royal Navy Board purchased the Earl of Pembroke from Thos. Millner for £2,800. The ship was on the Royal Navy list as a Bark and renamed Endeavour. The word "bark" alluded to build of the hull. Tree nails, oaken dowels 1" to 1 ½" thick and up to 3"6" long, were driven in as bolts. They were considered superior to iron because they remained swollen tight and did not induce "iron sickness" rust rot into the timber. Endeavour carried 10 x 4 pounder guns (carriage guns) and 12 swivels or blunderbusses. The Endeavour was built of oak, Baltic pine for the decks, topsides, masts and spars. Oak is very susceptible to rot and marine borers, particularly in the tropics.

THE REPLICA

None of the original woods were available in the quantities required so local wood was used. West Australian hardwood jarrah replaced the oak, Douglas fir and Oregon replaced the Baltic pine. Other woods used included Karri, Wandoo, Blackbutt tallow wood, she oak was used for the blocks. All the planking was done in the traditional way, using thousands of trunnels (wooden nails). The traditional skills of blacksmith and wood carver were used extensively throughout the ship. Modern paints and varnishes used to protect the hull and were matched to the original 18th century colors. Below the waterline and at the ends of the planks coach bolts were used instead of iron spikes for added security. As each piece of timber was shaped it was treated first with an epoxy-based preservative and finally red lead. Some people argued it had to be built with the same materials/tools with no additions but although a noble position to take, this would have created tremendous financial, maintenance and safety problems for the future. A compromise was found:

- The ship would be exhaustively researched for historical accuracy;
- Materials would be chosen for the greatest longevity, but original construction methods would not be compromised;
- Modern tools would be used; and
- A minimum of modern equipment would be installed to ensure safe navigation and health of the crew.

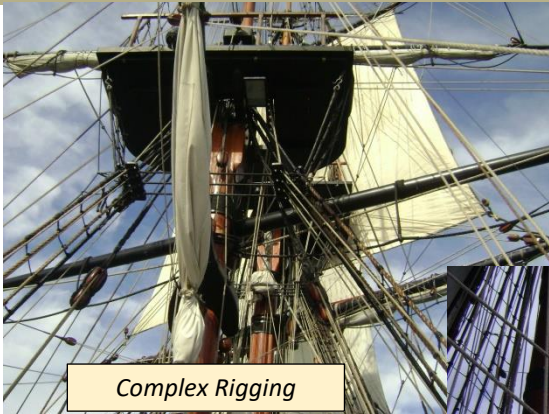


Endeavour Replica docked in Hobart

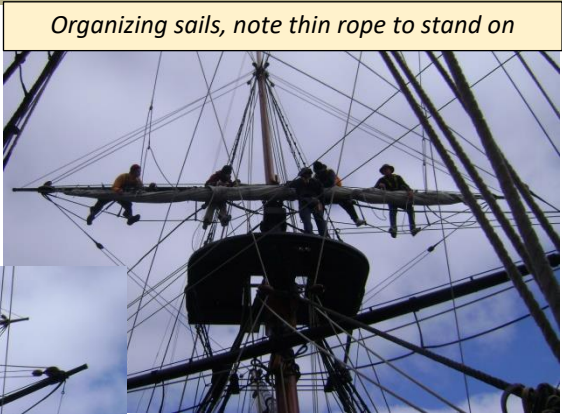


Leaving Hobart

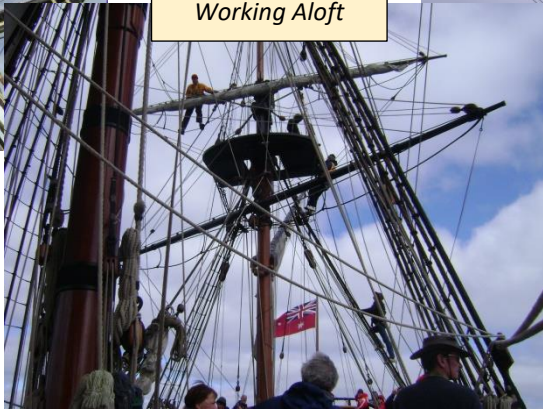
Members News



Complex Rigging



Organizing sails, note thin rope to stand on



Working Aloft

THE MODEL

Returning from my voyage I decided I would like to make a model of the original Endeavour. Believe it or not, sourcing a model kit proved to be difficult in Brisbane but I eventually found a kit at a hobby shop on Creek Road, Carindale. The proprietor asked me if I had ever made a model of this size and complexity before to which I replied “no”. I soon understood why he had a bemused look on his face when he said “don’t attempt to do any of this model unless you are in the right frame of mind.”



It wasn't long before I realized I was out of my depth and so I sought the assistance of Bevan Guttormsen who is a boat builder by trade and an experienced model boat builder. It has been a journey, but we are getting there, and Bevan has even said this project is right up there in terms of complexity in his experience. The reality is the model would not be completed without his expertise



Great Moments in Science with Dr. Karl Kruszelnicki

Dogs Tilt Their Heads

Dogs have been hanging around humans for at least 15,000 years. But we still haven't worked out the answers to the two big questions – do dogs really love us, and why do they sometimes tilt their heads in such an adorable and ridiculously cute manner?

Dogs evolved from wolves. But if you compare a dog and a wolf that've been both raised in close contact with humans, there are major differences. First if you offer both of them food, the dog will come for food, and then hang around for cuddles and companionship. But a wolf will take the food, and then vamoose. Second, suppose you set up an experiment where the human caregiver appears to be trapped inside a box -they're not really trapped - the dog will offer support and show signs of distress at the plight of the poor human, but the wolf just doesn't care.

It seems that part of the difference is related to two genes called GTF2I, and GTF2IRD1, and these genes are well known to have powerful effects upon sociability in mammals, including humans. Modern wolves usually have no mutations in these genes. But dogs can have up to six mutations – and the more mutations they have, the more they love humans.

The current thinking is that way back in time, a few wolves with one or two mutations approached humans for company. And this turned into a beautiful relationship where dogs and humans hang out a lot. Today, dogs and humans work, and play, together - companionship, police work, helping disabled people, protecting humans, pulling loads, and hunting. And when a dog and their human guardian look fondly at each other, their hormones respond. Their oxytocin levels rise, and that's associated with love and bonding. So, who even knows what love really is, but it seems that what a dog feels for their owner is pretty close.

So that's Love 101, so now let's look at why some dogs tilt their heads. Stanley Coren, the author of many dog books, explored this. One suggestion was that the dog wanted to aim one of its ears at their owner – to be better able to hear them. But mostly the dogs' ears were not even pointed at the owner. Another hypothesis was that the head-tilting was simply the dog letting the owner know that it was paying attention to them.

Another possibility that Stanley Coren came up with was that the long snout, or muzzle, of the dogs could potentially block the view of the owner's mouth, and perhaps simply tilting their head got their long muzzle out of the way. Check it out. Make a fist and hold it up to your nose. Now, look at a fellow human and you'll notice that you cannot clearly see their mouth – which is where words come from, but also, the centre of most human facial expressions. But when you tilt your head you can now see their mouth. Maybe this is happening in the dog, but we don't know for sure.

A more recent study looked at 40 dogs, and their ability to understand words that described their toys. After an initial three-month training period, where they were taught the names of their various toys, the dogs were tested. The owner and the dog would go to one room, while the toys remained in another room. The owner would then ask the dog to get the specific toy that they named.

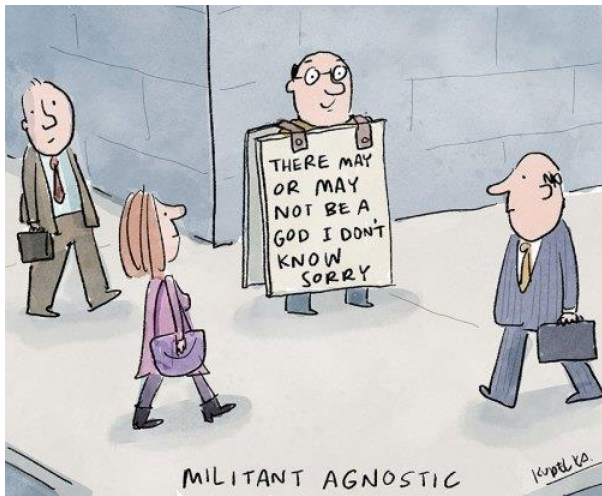
Now about 33 of the dogs were pretty hopeless at getting any of the named toys. But seven of the dogs were really good. They could bring back 10 or more toys. Now, initially the seven dogs could bring back the correct toy 86% of the time, which dropped to 61% a month later, and 57% another month after that. That is pretty impressive. In fact, one of the dogs could bring back the correct toy 54 times out of 59 tests.

Now here's the weird thing. When listening to the owner's instructions, the gifted dogs would tilt their head to the side 43% of the time, while the regular dogs that couldn't bring back the toy did so only 2% of the time. And the gifted dogs had a preferred direction of tilting, such as to the left or the right, which they stuck with.

At this stage we still don't really understand what's going on with the head tilt. Maybe the dogs are tilting their head, knowing that they look extra-cute, to make us love them as much as they love us. Or maybe I'm just barking up the wrong tree ...

<https://www.abc.net.au/radionational/programs/greatmomentsinscience/>

Puzzles, Jokes & Trivia



Friend: "On average how much do you spend on a bottle of wine?"
 Me: "About 10 minutes."

Do you know why you never see an elephant hiding in a tree?
 Because they're really good at it!!!

Can you work out the phrase, word or meaning represented by these visual puzzles?

▲ 1. thing M
 2. thing
 3. thing

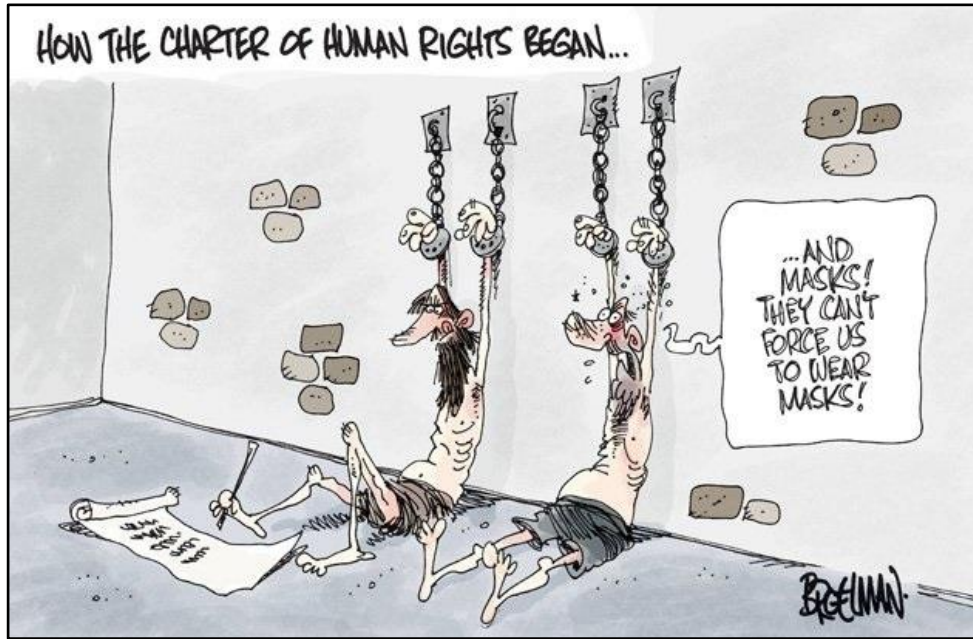
Tomorrow

Trivia Quiz

1. What state or territory capital city is close to Van Diemen Gulf?
2. Does sound travel faster in freshwater or saltwater?
3. How many black keys are on a standard piano?
4. In what city was the first "skyscraper" built in Australia in 1957?
5. What was the original flavour of Life Savers lollies?
6. Which Australian TV drama was set in Pearl Bay?

Quiz & puzzle solutions next page

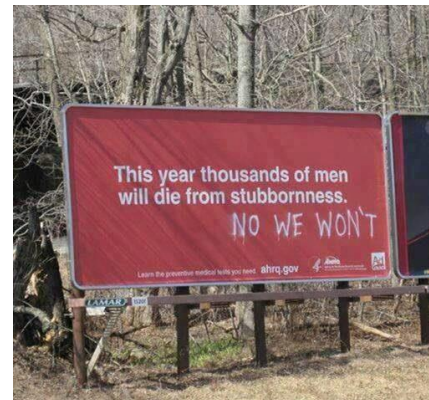
Puzzles, Jokes & Trivia



A WISE MAN ONCE TOLD HIS SON:
 MY BOY, WHEN YOU ACCUMULATE THE UNDERSTANDING TO KNOW WHY A PIZZA IS MADE ROUND, TO BE PUT IN A SQUARE BOX & IS EATEN IN TRIANGLES, THEN & ONLY THEN WILL YOU BE ABLE TO UNDERSTAND WOMEN

I just finally discovered what's wrong with my brain: on the left side there is nothing right and on the right side, there is nothing left.

Cool Funny Quotes.com



- Trivia Quiz Answers**
1. Darwin in the Northern Territory.
 2. Saltwater.
 3. 36 black keys on standard piano.
 4. Melbourne (ICI House now known as Orica House).
 5. Pep-O-Mint.
 6. Sea Change.

Visual Puzzles solutions

First Thing in the Morning
Back to the Future